

Dec 19 - Dec 23

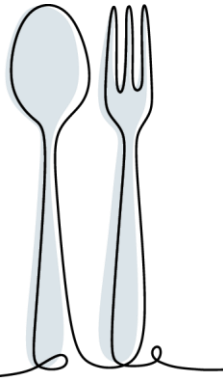
Tupelo Marketplace

Monday – Friday

Breakfast 6:30 am – 9:30 am

Lunch 11:00am- 1:00 pm

Grab and Go 24 hours



THIS WEEK'S MENU FEATURES

MONDAY

Breakfast- eggs, bacon, sausage, biscuits, country gravy, potatoes and more

Deli and grill open for lunch

TUESDAY

Breakfast- eggs, bacon, sausage, biscuits, country gravy, potatoes and more

Deli and grill open for lunch

WEDNESDAY

Breakfast- eggs, bacon, sausage, biscuits, country gravy, potatoes and more

Deli and grill open for lunch

THURSDAY

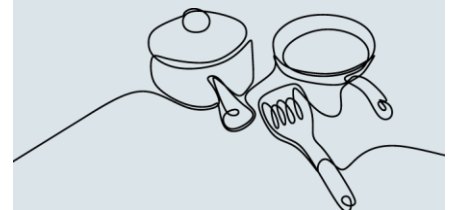
Breakfast- eggs, bacon, sausage, biscuits, country gravy, potatoes and more

Deli and grill open for lunch

FRIDAY

closed

DON'T MISS THIS



QUESTIONS?

Mandi Fox | Chef Manager | mandi.fox@compass-usa.com | 662.566.5770
delivery.zipthruordering.com/generalatomics/