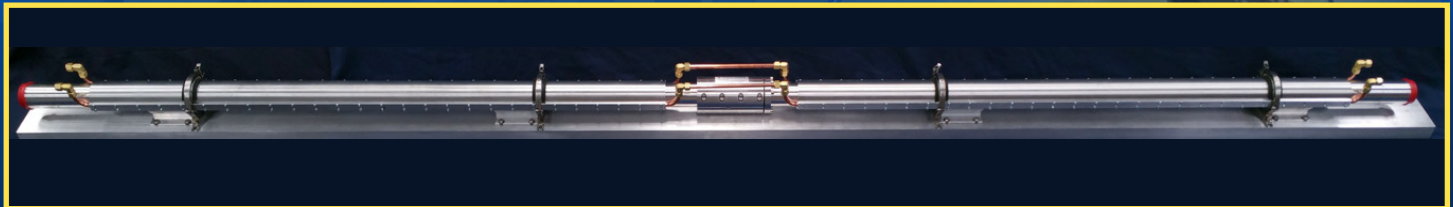


# HIGH-POWER CORRUGATED WAVEGUIDE COMPONENTS

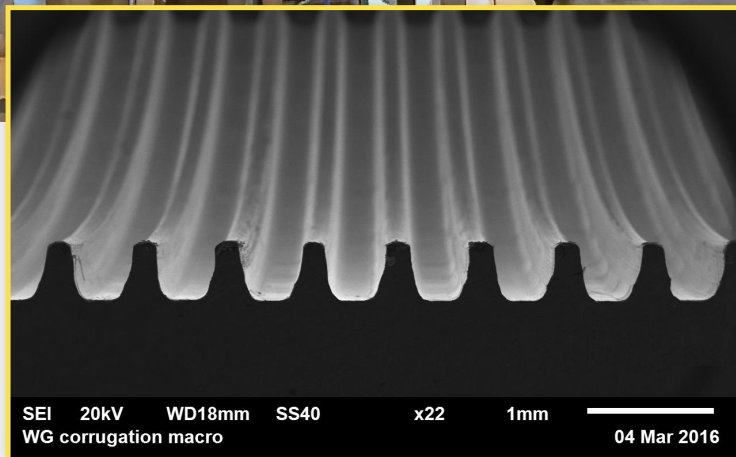
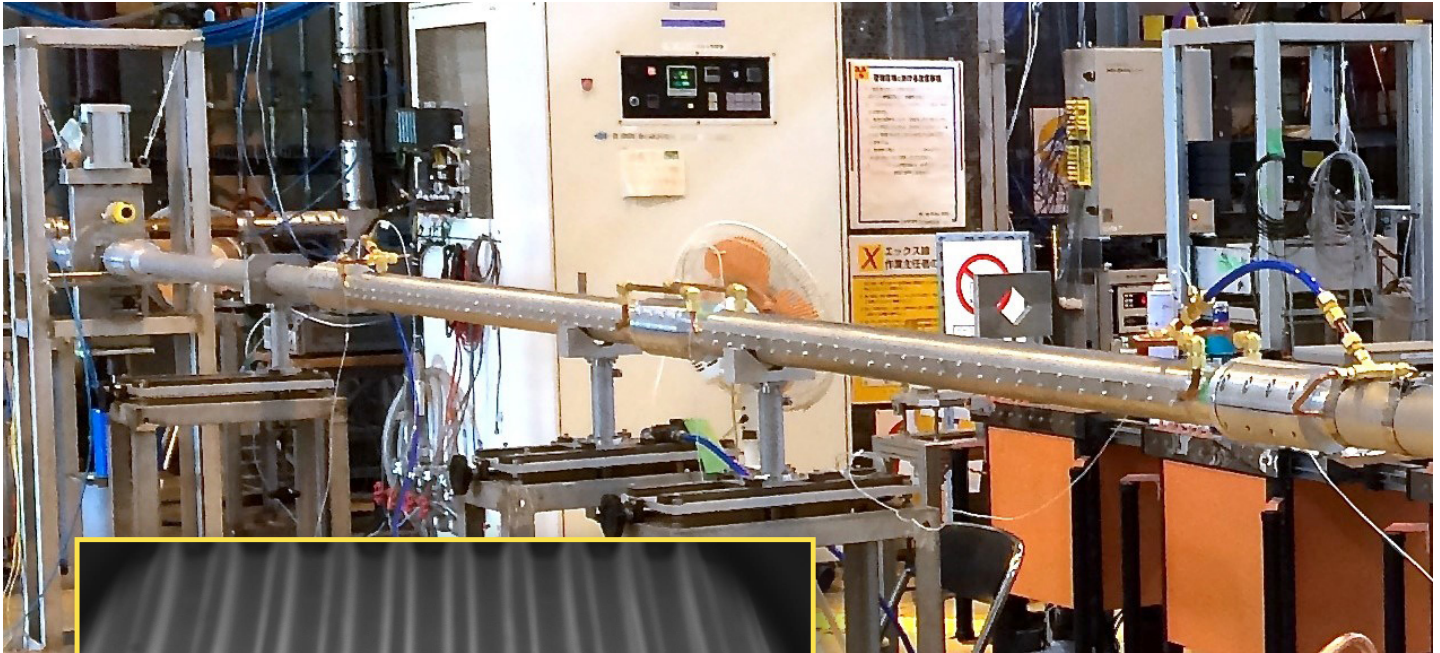
## *4.2 Meter Corrugated Waveguide Assembly*



*Designed for 1.5 MW, continuous wave operation*

## 4.2 METER CORRUGATED WAVEGUIDE ASSEMBLY

General Atomics (GA) offers a state-of-the-art 4.2 meter corrugated waveguide assembly



### GA'S 4.2 METER CORRUGATED MICROWAVE WAVEGUIDE ASSEMBLY FEATURES:

- 4.2 meter length minimizes the number of transmission line components
- Low transmission loss for more efficient transmission
- 2-channel water cooling enables extended microwave pulse length operation
- High-precision coupling interfaces offer easy, accurate alignment with mating components

Ray O'Neill, RF Engineering Manager

Ph: 858-455-5214 | E: [oneill@fusion.gat.com](mailto:oneill@fusion.gat.com)

GENERAL ATOMICS 3550 General Atomics Court, San Diego, CA 92121, USA [WWW.GA.COM](http://WWW.GA.COM)

3407-0816