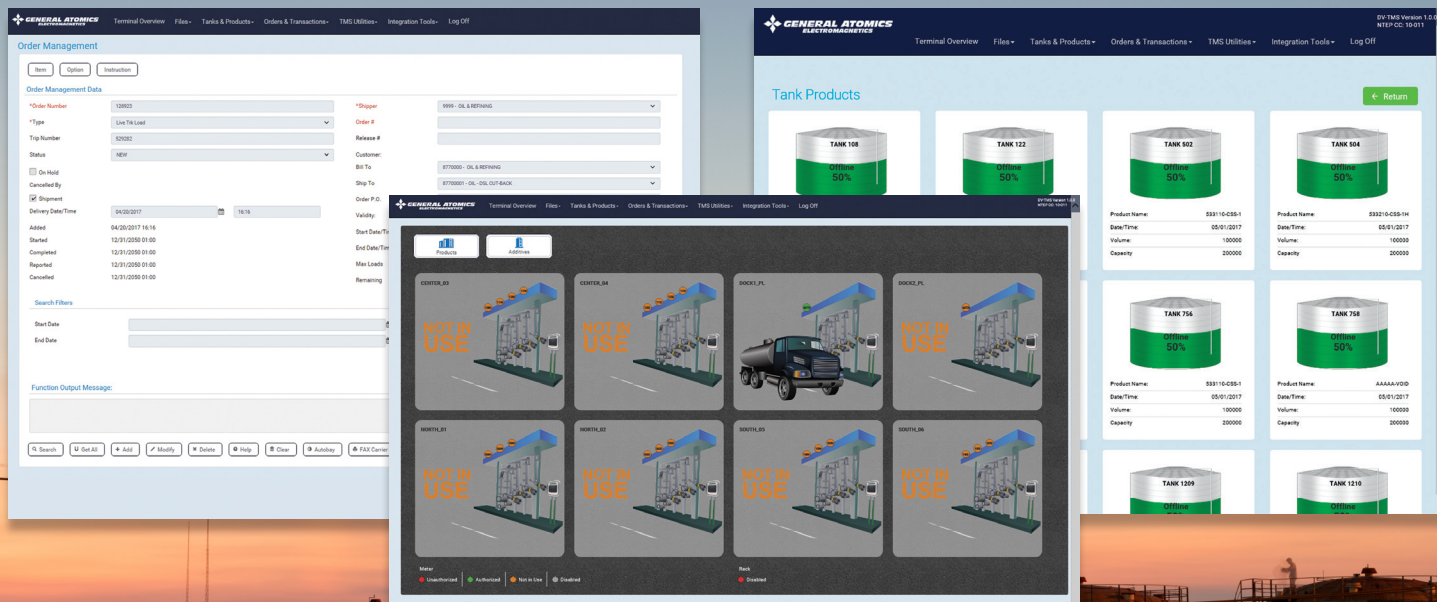


# DATAVANTYX TERMINAL MANAGEMENT SYSTEM



The DataVantyx® Terminal Management System (DV-TMS) is an integrated 64-bit solution for the automation, management, operation, and maintenance of assets for any size terminal operation and bulk product inventory, including oil, gas, chemical, fertilizer, refined products, LPG, or LNG.

## Terminal Management to Fit Your Needs

- Process transactions
- Control orders/allocation
- Process monitoring and control
- Inventory management
- Reports generation, bills of lading
- Interface to company-wide systems and network

# DATAVANTYX TERMINAL MANAGEMENT SYSTEM

DV-TMS integrates with and controls loading racks and field-level devices for faster, more secure driver login and access, transaction processing, dispatching, manifest generation, and inventory control. DV-TMS also interfaces with corporate ERP systems to facilitate the smooth exchange of data through a company's network. With an intuitive web interface, operators can quickly access and process information to manage operations, product movement, and customer transactions to create greater efficiencies and throughput. As operations expand, the system is configurable to meet changing requirements for new products and additives, and the installation of additional field devices, databases, printers, and equipment.

## KEY BENEFITS

- Unlimited load-rack connections and client access included
- Windows environment, reliability of Linux
- Scripting engine for customizing reports, scheduling, and processes
- Scalable, open architecture
- Easy integration to industry devices
- ODBC-compliant, full relational database
- NTEP weights and measures certified
- 24/7/365 lifetime support
- In-depth training
- Customization services and support



DV-TMS is easy to deploy and troubleshoot, providing fast start-up and processing capabilities to reduce downtime and ensure reliable performance. The latest cybersecurity features are included for safe and secure company-wide access to data from any computer.

**Allocations Details**

Update Used To Date | New Allocation Key | Price Allocation Key

Allocation Key: 29-AAFCS-E10 | Allocation Group: | Reset Amount: | Memo: |

Starting Allocation: | Ignore Base Flow: |

+ Add | - Modify | \* Delete | ? Help | B Clear | C

**Allocation Details List**

Select	Storage	Overhaul	Reset Amount	Starting	Used Today	Used to Date	Available
	10	0	0	0	0.0000	0.0000	0

Reference: Allocation Group Definitions

Alloc. Name	Product	Product Name
10	1102201	E10 SHELL PREMIUM GASOIL
10	1102202	E10 SHELL REGULAR GASOIL
10	1102203	E10 SHELL MEDIUM GRADE GASOIL
10	1311131	E10 PREMIUM GASOIL
10	1311132	E10 PREMIUM TOP TIER TREATED
10	1311133	E10 REGULAR GASOIL
10	1311134	E10 REG. TOP TIER TREATED
10	1311135	E10 MEDIUM GRADE GASOIL
10	1311136	E10 REG. TOP TIER TREATED
11	1101101	PREMIUM REGULAR DIESEL
11	1101102	PREMIUM REGULAR DIESEL
11	1101103	PREMIUM REGULAR DIESEL
11	1101104	PREMIUM REGULAR DIESEL
11	1101105	PREMIUM REGULAR DIESEL
11	1101106	PREMIUM REGULAR DIESEL
11	1101107	PREMIUM REGULAR DIESEL
11	1101108	PREMIUM REGULAR DIESEL
11	1101109	PREMIUM REGULAR DIESEL
11	1101110	PREMIUM REGULAR DIESEL
11	1101111	PREMIUM REGULAR DIESEL
11	1101112	PREMIUM REGULAR DIESEL
11	1101113	PREMIUM REGULAR DIESEL
11	1101114	PREMIUM REGULAR DIESEL
11	1101115	PREMIUM REGULAR DIESEL
11	1101116	PREMIUM REGULAR DIESEL
11	1101117	PREMIUM REGULAR DIESEL
11	1101118	PREMIUM REGULAR DIESEL
11	1101119	PREMIUM REGULAR DIESEL
11	1101120	PREMIUM REGULAR DIESEL
11	1101121	PREMIUM REGULAR DIESEL
11	1101122	PREMIUM REGULAR DIESEL
11	1101123	PREMIUM REGULAR DIESEL
11	1101124	PREMIUM REGULAR DIESEL
11	1101125	PREMIUM REGULAR DIESEL
11	1101126	PREMIUM REGULAR DIESEL
11	1101127	PREMIUM REGULAR DIESEL
11	1101128	PREMIUM REGULAR DIESEL
11	1101129	PREMIUM REGULAR DIESEL
11	1101130	PREMIUM REGULAR DIESEL
11	1101131	PREMIUM REGULAR DIESEL
11	1101132	PREMIUM REGULAR DIESEL
11	1101133	PREMIUM REGULAR DIESEL
11	1101134	PREMIUM REGULAR DIESEL
11	1101135	PREMIUM REGULAR DIESEL
11	1101136	PREMIUM REGULAR DIESEL
11	1101137	PREMIUM REGULAR DIESEL
11	1101138	PREMIUM REGULAR DIESEL
11	1101139	PREMIUM REGULAR DIESEL
11	1101140	PREMIUM REGULAR DIESEL
11	1101141	PREMIUM REGULAR DIESEL
11	1101142	PREMIUM REGULAR DIESEL
11	1101143	PREMIUM REGULAR DIESEL
11	1101144	PREMIUM REGULAR DIESEL
11	1101145	PREMIUM REGULAR DIESEL
11	1101146	PREMIUM REGULAR DIESEL
11	1101147	PREMIUM REGULAR DIESEL
11	1101148	PREMIUM REGULAR DIESEL
11	1101149	PREMIUM REGULAR DIESEL
11	1101150	PREMIUM REGULAR DIESEL
11	1101151	PREMIUM REGULAR DIESEL
11	1101152	PREMIUM REGULAR DIESEL
11	1101153	PREMIUM REGULAR DIESEL
11	1101154	PREMIUM REGULAR DIESEL
11	1101155	PREMIUM REGULAR DIESEL
11	1101156	PREMIUM REGULAR DIESEL
11	1101157	PREMIUM REGULAR DIESEL
11	1101158	PREMIUM REGULAR DIESEL
11	1101159	PREMIUM REGULAR DIESEL
11	1101160	PREMIUM REGULAR DIESEL
11	1101161	PREMIUM REGULAR DIESEL
11	1101162	PREMIUM REGULAR DIESEL
11	1101163	PREMIUM REGULAR DIESEL
11	1101164	PREMIUM REGULAR DIESEL
11	1101165	PREMIUM REGULAR DIESEL
11	1101166	PREMIUM REGULAR DIESEL
11	1101167	PREMIUM REGULAR DIESEL
11	1101168	PREMIUM REGULAR DIESEL
11	1101169	PREMIUM REGULAR DIESEL
11	1101170	PREMIUM REGULAR DIESEL
11	1101171	PREMIUM REGULAR DIESEL
11	1101172	PREMIUM REGULAR DIESEL
11	1101173	PREMIUM REGULAR DIESEL
11	1101174	PREMIUM REGULAR DIESEL
11	1101175	PREMIUM REGULAR DIESEL
11	1101176	PREMIUM REGULAR DIESEL
11	1101177	PREMIUM REGULAR DIESEL
11	1101178	PREMIUM REGULAR DIESEL
11	1101179	PREMIUM REGULAR DIESEL
11	1101180	PREMIUM REGULAR DIESEL
11	1101181	PREMIUM REGULAR DIESEL
11	1101182	PREMIUM REGULAR DIESEL
11	1101183	PREMIUM REGULAR DIESEL
11	1101184	PREMIUM REGULAR DIESEL
11	1101185	PREMIUM REGULAR DIESEL
11	1101186	PREMIUM REGULAR DIESEL
11	1101187	PREMIUM REGULAR DIESEL
11	1101188	PREMIUM REGULAR DIESEL
11	1101189	PREMIUM REGULAR DIESEL
11	1101190	PREMIUM REGULAR DIESEL
11	1101191	PREMIUM REGULAR DIESEL
11	1101192	PREMIUM REGULAR DIESEL
11	1101193	PREMIUM REGULAR DIESEL
11	1101194	PREMIUM REGULAR DIESEL
11	1101195	PREMIUM REGULAR DIESEL
11	1101196	PREMIUM REGULAR DIESEL
11	1101197	PREMIUM REGULAR DIESEL
11	1101198	PREMIUM REGULAR DIESEL
11	1101199	PREMIUM REGULAR DIESEL
11	1101200	PREMIUM REGULAR DIESEL

**Shipper File Management**

Links | Allocations | Instructions | Spot Lockout | Groups

\*Shipper Number: | Fed Tax ID: |

Shipper Name: | State Tax ID: |

Address 1: | State: |

Address 2: | City: |

Contact: | Zip: |

Phone: |

Cell Phone: |

Fac: |

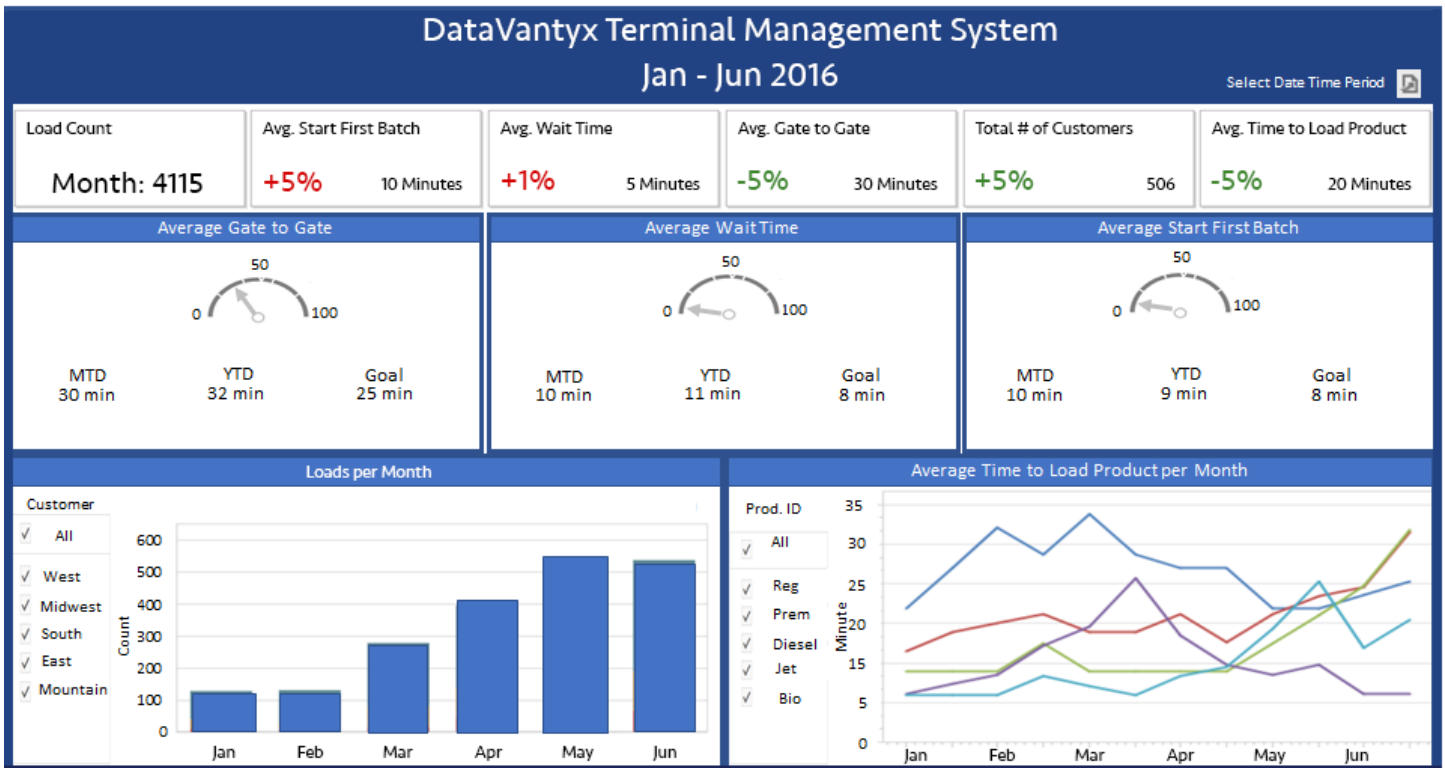
On Allocation:  Locked Out:

Search | Get All | Add | Modify | Delete | Help | Clear

**Shipper List**

Select	Shipper	Name	On Allocation	Locked Out	Hold Blank	Enable Add
	8888	GA SHIPPER	No	No	No	No
	9999	U.S. OIL & REFINING CO.	No	No	No	No
	80001	AAAFS	No	No	No	No
	90001	ACME FUEL CO.	No	No	No	No
	110040	AGGREGATE CONSTRUCTION INC	No	No	No	No
	140002	A. A. ASPHALTINE	No	No	No	No
	170019	ALBINA HOLDINGS - SCALE	No	No	No	No
	210000	ALLED FUEL, LLC	Yes	No	No	No

## ANALYTICS AT THE SPEED OF BUSINESS



DV-TMS is based on the DataVantyx platform, a customizable, integrated analytics and modeling system designed to create actionable, analytics-based intelligence to help businesses remain agile and operate at peak performance.

The DataVantyx Enterprise System allows customers to create specific analyses and dashboards to manage, diagnose and predict the performance, health and readiness of systems and assets, spot trends, and respond quickly to changing dynamics. DataVantyx integrates, correlates, and extracts information from all available real-time and historical data sources, including databases, numerical, text and log files, devices, and sensors. Through advanced analytic data modeling, DataVantyx provides tailored diagnostic and predictive analyses to help customers manage and maintain assets, mitigate risk, accelerate responsiveness, improve productivity, and reduce costs.

DataVantyx also supports edge analytics, providing a more efficient way to leverage the vast amount of real-time data generated by distributed devices, such as sensors and nodes, and quickly react to events at the device level.



# TERMINAL AUTOMATION PRODUCTS

In addition to DV-TMS, we offer ATEX certified, Class 1 Division 1 explosion-proof field devices to facilitate terminal access and loading, and to provide operations status inside hazardous locations.



## PR3000EX PROXIMITY READER

- Provides secure identification and validation
- Quick status recognition for entry/exit at gates and scale loading stations
- Works with DV-TMS or other automation systems



## POWERLOAD II PRESET/BATCH CONTROLLER

- Supports rail, truck, barge and tank loading/blending control and unloading
- Intuitive touch-screen interface
- Communicate via TCP/IP to terminal automation systems
- Manage loading areas, diagnose problems, update configurations



## HMI3000EX

- Computer control system for any environment
- Built-in PC with intuitive graphical display
- Easy to use touch screen interface