



CrimeCam Examiner+

SEE THE UNSEEN. CAPTURE THE TRUTH.

The **CrimeCam Examiner+** is an all-in-one forensic camera and lighting system for crime scene investigation and evidence detection and gathering. The system's unique Ring Light provides:

- 24 UV LEDs (395nm) for forensic illumination
- 24 Blue LEDs (470nm) for forensic illumination
- 16 Bright White LEDs for normal macro photography

The hands-free design eliminates the need for separate lighting tools or mounting accessories, streamlining evidence capture. Ideal for detecting and documenting bruises, bite marks, biological fluids, and trace evidence, the CrimeCam Examiner+ enhances both visibility and workflow in the field or lab

Detects:

Biologicals
Bruising
Fibers/Trace
Bite Marks
Strangulation Marks
Treated Finger Prints

CrimeCam Examiner+

FEATURES

Ring Light

- 24 UV LEDs (395nm)
- 24 Blue LEDs (470nm)
- 16 Bright White LEDs
- LEDs can operate in continuous ON mode
- Flash selection: left half, right half, or all
- Seven levels of digitally-controlled LED intensity
- Manual on/off power button
- Camera hot-shoe controlled LED flash
- LCD mode and battery charge indicators
- Back-lit LCD control panel
- Back light power saver dims after 15 seconds
- Auto-off function after 15 minutes of inactivity



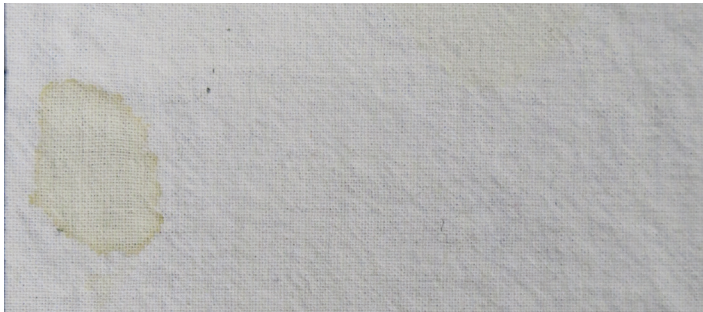
Camera

- Canon EOS Rebel T7 DSLR camera with 18-55mm lens
- 8GB memory card
- 24.1 megapixel, 3x optical zoom
- Full HD Video (1920 × 1080)

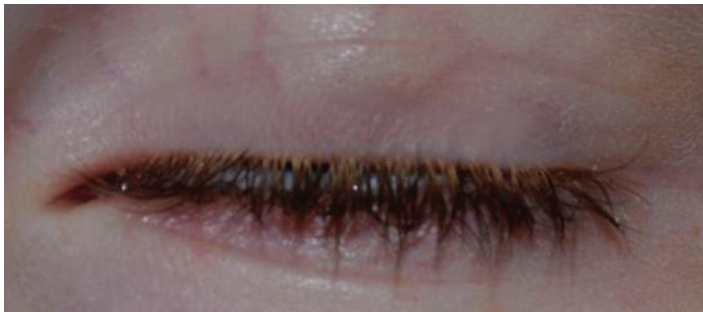
IMAGES USING STANDARD PHOTOGRAPHY AND LIGHTING



Knife stained with Rhodamine 6G



Protein stains on sheet



Eyelid bruise

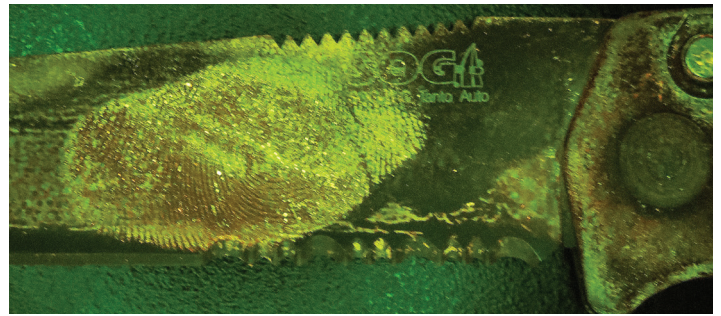


Bodily bruise

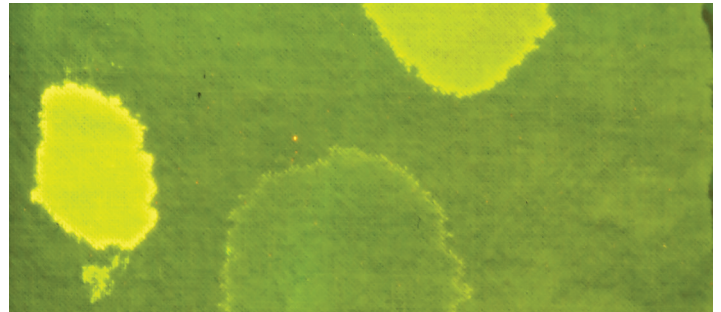


Protein stains on carpet

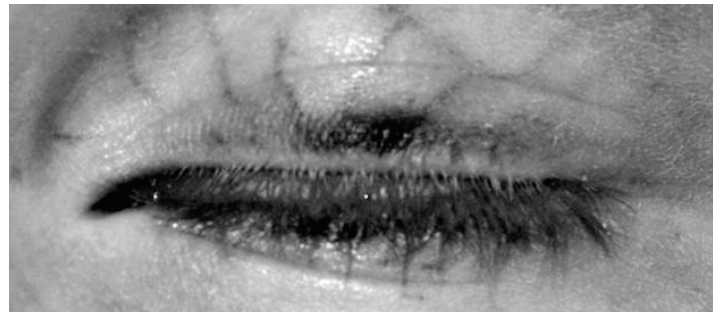
IMAGES USING THE CRIMECAM EXAMINER+ RING LIGHT



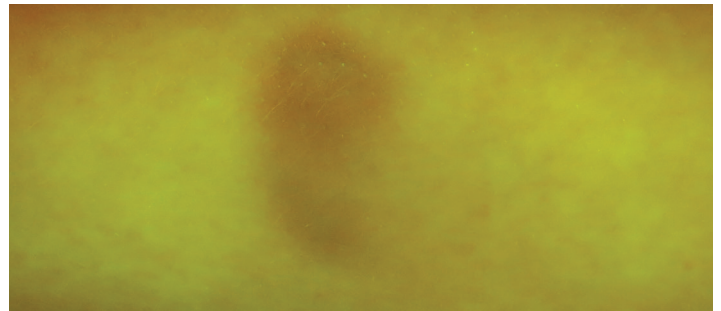
Blue light and orange filter



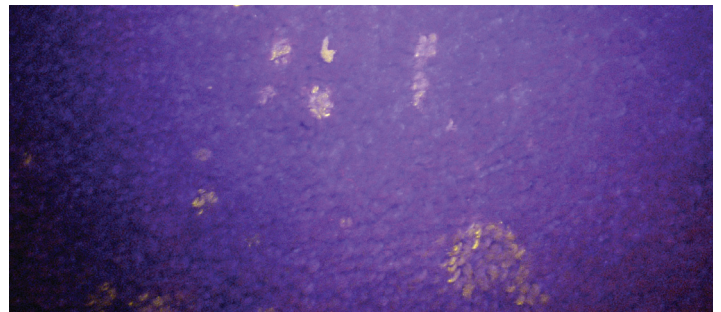
UV light and yellow filter



UV light and yellow filter



UV light and yellow filter



UV light and yellow filter

CrimeCam Examiner+

Ring Light

Lighting Components:

24 UV LEDs (395nm)
24 Blue LEDs (470nm)
16 Bright White LEDs

Optical Accessories:

Yellow Filter
Orange Filter
Clear and Frosted Diffuser Rings
Ring Light to Camera Adapter

Protective Eyewear:

2 Nylon-Rimmed Goggles (fit over glasses):
Yellow and Orange
2 Filter Goggles: Yellow and Orange

Power & Charging:

8 NiMH AA Rechargeable Batteries
Battery Charger

Included Materials:

User's Manual
Carrying Case

Canon EOS Rebel T7
Digital Camera

Key Features:

8GB Memory Card
24.1 Megapixels
3x Optical Zoom
3.0 in., 920,000-pixel LCD Screen
Full HD Video (1920 x 1080)
0.1 Second Boot Time
3 Frames/Second Recycle Time
0.24 Second Shutter Lag
Wi-Fi (Wireless LAN)

Included Accessories:

Battery Pack
Battery Charger
Lens Cap
4-Foot USB 2.0 Data Cable
Neck Strap
User's Manual

The CrimeCam Examiner+ Ring Light is available separately and can be easily attached to most Nikon and Canon cameras.



CONTACT INFORMATION

ems-detectimage.info@ga.com



SCAN TO LEARN MORE