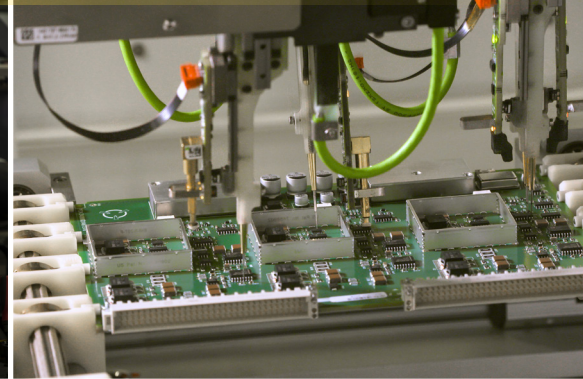


MANUFACTURING SOLUTIONS



General Atomics Electromagnetic Systems (GA-EMS) Manufacturing Solutions offer OEMs and system integrators convenient, on-shore contract manufacturing services for fabricating, assembling, testing, and finishing specialized components for aerospace/defense, energy, industrial, and commercial applications. Our manufacturing Center of Excellence near Tupelo, Mississippi combines extensive manufacturing and testing expertise with cutting-edge equipment to support exacting component and product designs.

MANUFACTURING SOLUTIONS

GA-EMS Manufacturing Solutions offers prototyping through to full production, short to long runs, and low to large volume manufacturing and assembly services. We machine, assemble, and test components to meet tight tolerances and harsh environments, and measure each product against the highest quality, compliance, and safety standards in the industry. We have a proven track record for competitive pricing, on-time delivery, and a high pass rate for final acceptance.

CAPABILITIES AND SERVICES

- Precision machining
- State-of-the-art, multi-shift operation machining centers with small to large CNC machines
- Classified to Collateral Secret level
- Advanced Printed Circuit Board Assembly (PCBA) with best-in-class automation including Surface Mount Technology (SMT)
- Fabrication
- Cabling
- Complex electrical motor winding
- Multi-megawatt test capabilities
- Testing (electrical, mechanical and hydraulic)
 - High voltage corona and partial discharge testing
 - Routine electrical (surge comparison, AC & DC HI-POT, Micro-PHM)
 - Structure and airborne noise
- Build-to-order, configure-to-order
- Tool & mold design
- Assembly
- Prototyping
- Supply chain management
- Logistics services
- Aftermarket services (RMA, repair/warranty, failure analysis)

QUALITY AND CERTIFICATIONS

- ISO 9001:2015 and AS9100:2016
- ISO 14001:2015
- Capability Model Maturity Integration (CMMI) V2.0 level 3 for Services and Development
- 10CFR50, Appendix B/NQA-1
- MIL-STD-2037 Sealed Insulation System
- IPC-A-610/IPC J-STD-001 (including space addendum), IPC-A-620
- Fiber optics
- Six Sigma (green and black belts)
- Lean management
- Electrostatic Discharge (ESD) control certified
- Electronic Permitting System/Department of Transportation (EPS/DOT)
- ANSI Y14.5 Geometric Dimensioning & Tolerancing (GD&T)
- Hazardous toxic waste management (RCRA)
- Hazardous Materials Transportation (HMT P30)
- OSHA certifications
 - 24 hour HazWoper certified emergency response team
 - NIMS Incident Command System
 - 10/30 hour safety certifications
 - Crane, forklift, incident command system
- Pressure Vessel Certification of Authorization
 - ASME Pressure Equipment (U Stamp. S Stamp in progress)
 - National Board Pressure Equipment (R Stamp)
- Metal Inert Gas (MIG)/Metal arc welding certifications
- American Welding Society (AWS) Certified Weld Inspectors (CWI)
- ASNT Nondestructive Testing (NDT) and NACE certified inspectors