

Providing customized application solutions for a range of sensors, systems, and platforms

Prototyping Areas Include:

- Remote-shared collaborative scientific visualization
- Command and control
- Military force protection
- High value asset protection for homeland security

Capabilities for Deployment

- Mobile high resolution tiled wall
- Visualization for network of sensors
- Handheld interaction control
- Live UAV fed images

Assisting other GA Activities

- Kill Assist All-weather Targeting System (KAATS)
- CLAW control and analysis software
- LIDAR imaging through obscurants
- E-Smart threat agent detection network

Contact for Further Information:

David Schissel

schissel@fusion.gat.com

Director

Advanced Imagery Lab

(858) 455-3387

Carolyn Isherwood

isherwood@fusion.gat.com

Coordinating Administrator

Advanced Imagery Lab

(858) 455-3193



3550 General Atomics Court
San Diego, CA 92121
USA

(858) 455-3000

ail@fusion.gat.com

<http://web.gat.com/ail>

Advanced Imagery Lab

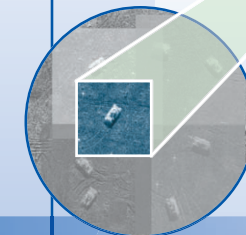
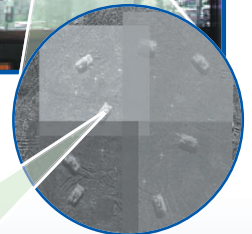
SIMPLIFYING COMPLEXITY

Tailored Information Analysis & Visualization

Large Scale (16' X 8')



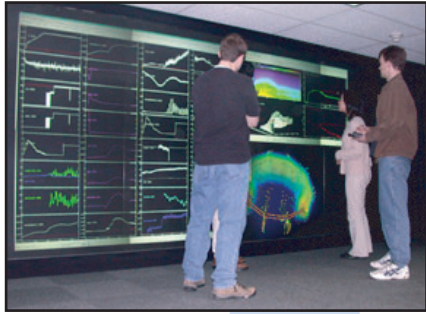
High resolution display
(10x desktop resolution)



Interactive Display
Multiple Sensor Capability



Scientific Visualization
Single Site or Collaborative



High Resolution with Large Field of View



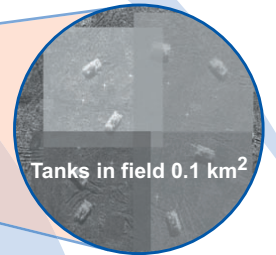
Synthetic Aperture Radar & Optical Overlay



Tiled Display Powered by Parallel Clustered Architecture



**See the
Big Picture**

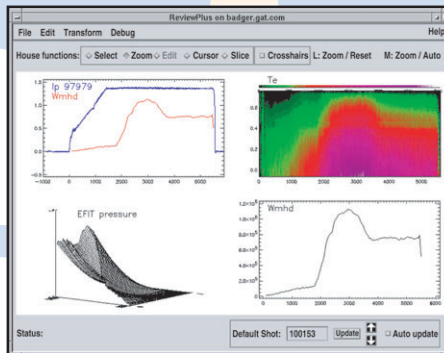


**Step up to
the Detail**

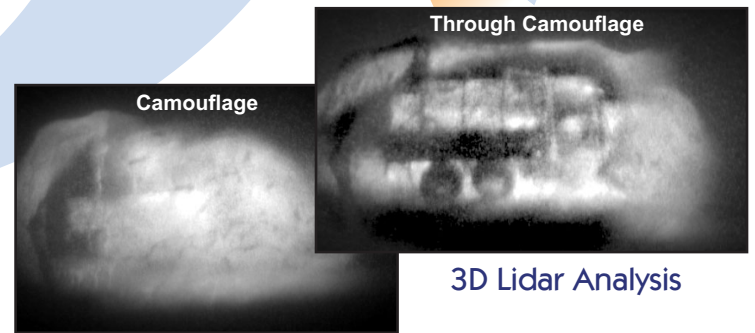
SAR strip map of 2.6 km² land mass



Pattern Recognition in Analysis



Scientific Data Analysis



3D Lidar Analysis